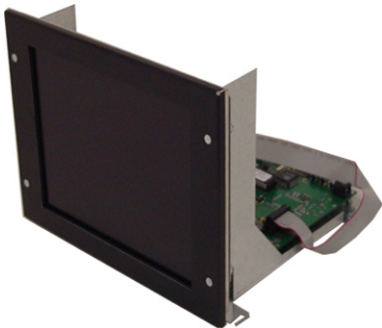
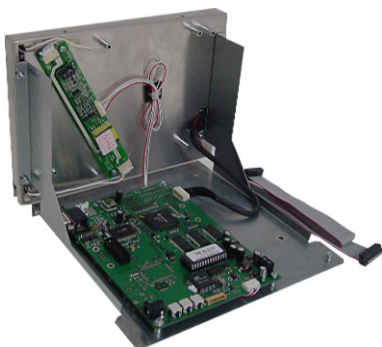


# Replacement TFT-LCD Monitor



## Series: Siemens Sinumerik

The TFT-Industrial-Monitor is a modern concept to replace old or defective 9" CRTs mounted in Control Units of Siemens Sinumerik. All Units are Made in Germany, using only high quality components. A mechanic housing, similar to the original Unit, makes it easy to exchange in just a few minutes. The new display is plug&play 100% compatible to the Siemens Sinumerik equipment and offers a Backlight Lifetime of 50.000 hours.

- **For Siemens Sinumerik S3 and 810**
- Siemens Special Timings
- mech. Type: Chassis
- Powersupply 12-15VDC
- TFT-Display: 8,4" active matrix
- Brightness: 450 cd/m<sup>2</sup>
- Contrast Ratio: 500:1
- Backlight Lifetime ca. 50.000 h
- Front plate with antireflex coated glass
- VDE 0100, 0411, 0804, 0871B and CE-Mark

### Order-No.:

Siemens Sinumerik S3 2361501

Siemens Sinumerik 810 2361283

Subject to change without prior notice and any misprints