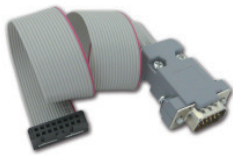
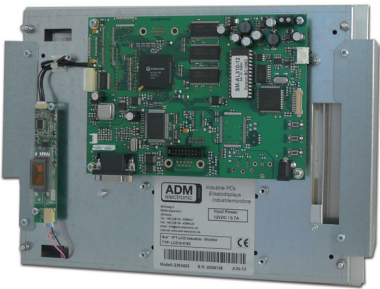
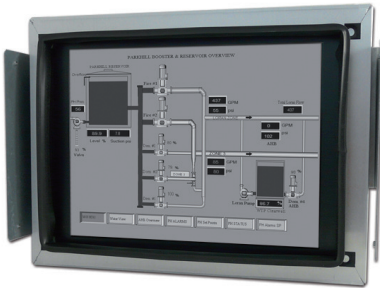


# Replacement TFT-LCD Monitor



## Series: Trumpf



Adapter cable

The TFT-Industrial-Monitor is a modern concept to replace old or defective 12" CRTs mounted in control units of Bosch.

All units are Made in Germany, using only high quality components. A mechanic housing, similar to the original unit, makes it easy to exchange in just a few minutes. The new display is plug&play 100% compatible to the Bosch / Trumpf equipment.

- **For Trumpf Trumatic 120, 235, 240, 240 Rotation with control Bosch CC200, CC220**
- Bosch special timing
- mech. type: Chassis with curve
- Curve with antireflex coated glass
- Connector monitor: 15pin HD D-Sub
- Adapter cable: 15pin HD D-Sub -->16pin/2rows
- Input voltage: 12V DC (via adapter cable)
- TFT-Display, screen size 10.4"
- Resolution: 800 x 600
- Brightness: 250 cd/m<sup>2</sup>
- Contrast Ratio: 400:1
- Backlight lifetime: ca. 30.000 h
- VDE 0100, 0411, 0804, 0871B and CE-Mark

Order-no.:

10.4" Trumpf Trumatic

2363422